

PRINCESS S78

SPECIFICHE

DIMENSIONI PRINCIPALI

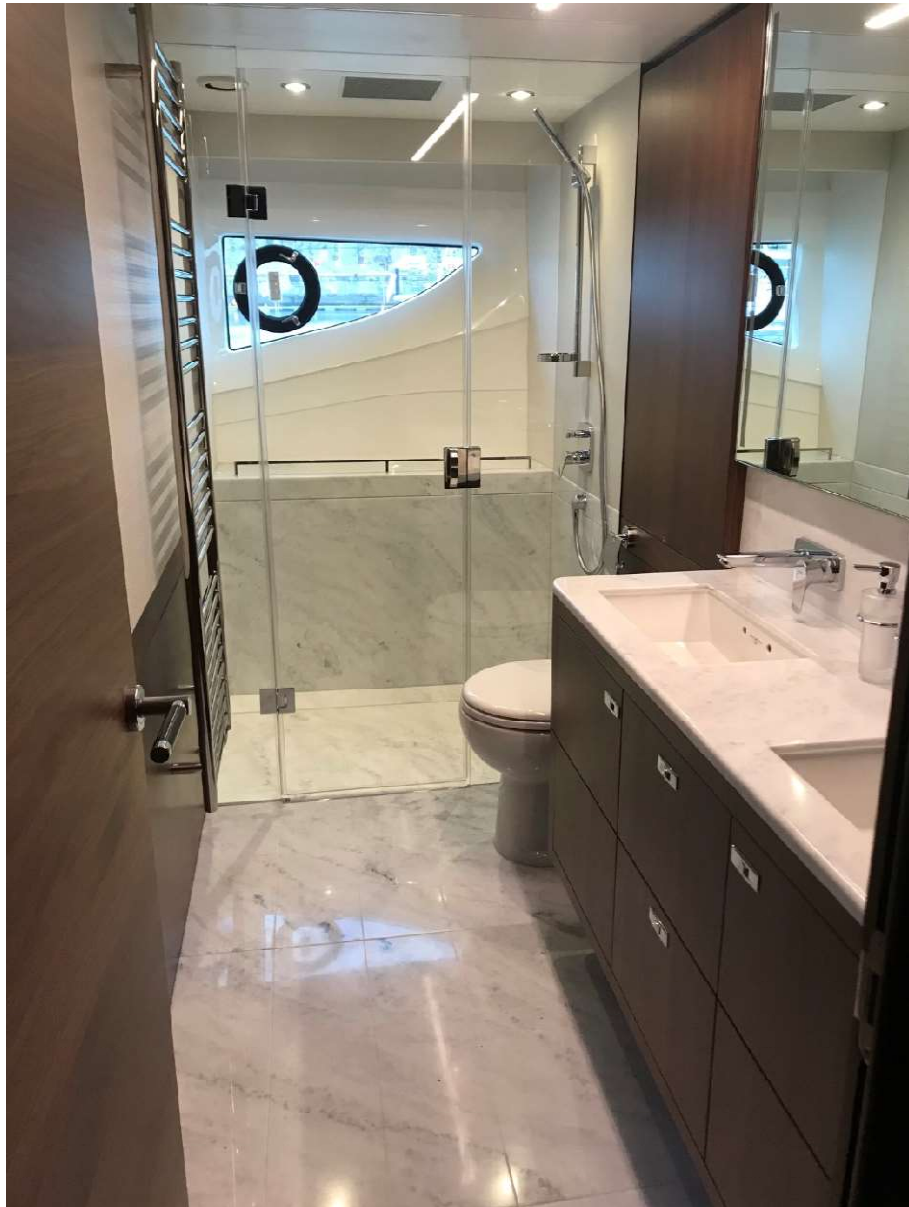
Lunghezza fuori tutto (incluso pulpito)	24,66 mt
Lunghezza fuori tutto (escluso pulpito)	24,03 mt
Larghezza	5,76 mt
Pescaggio	1,77 mt
Peso approssimativo	49.500 Kg
Capacità carburante	6.000 l
Capacità acqua (incl. boiler)	1.350 l

MOTORIZZAZIONE - DIESEL

Twin MAN V12 (2 x 1.900 hp)

Velocità: 37-39 nodi























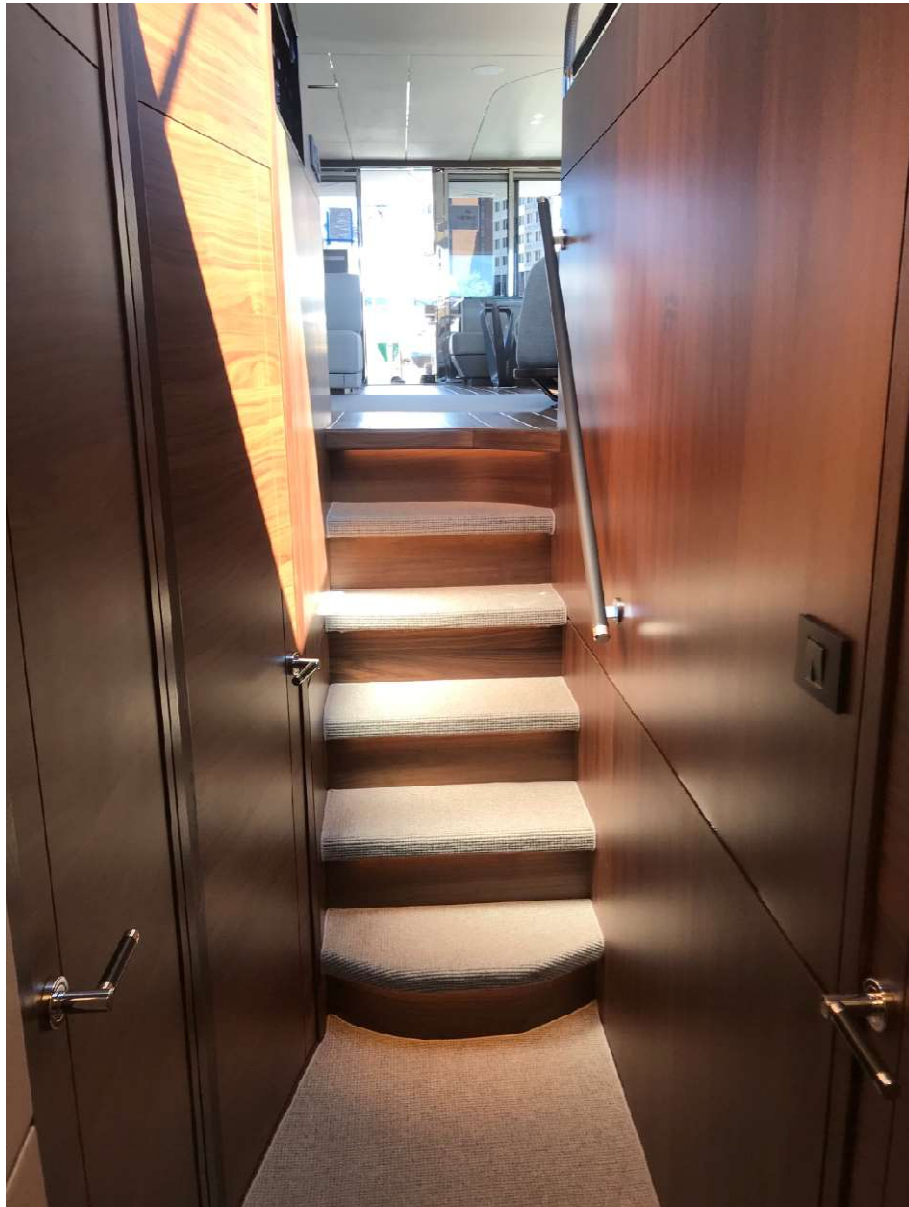










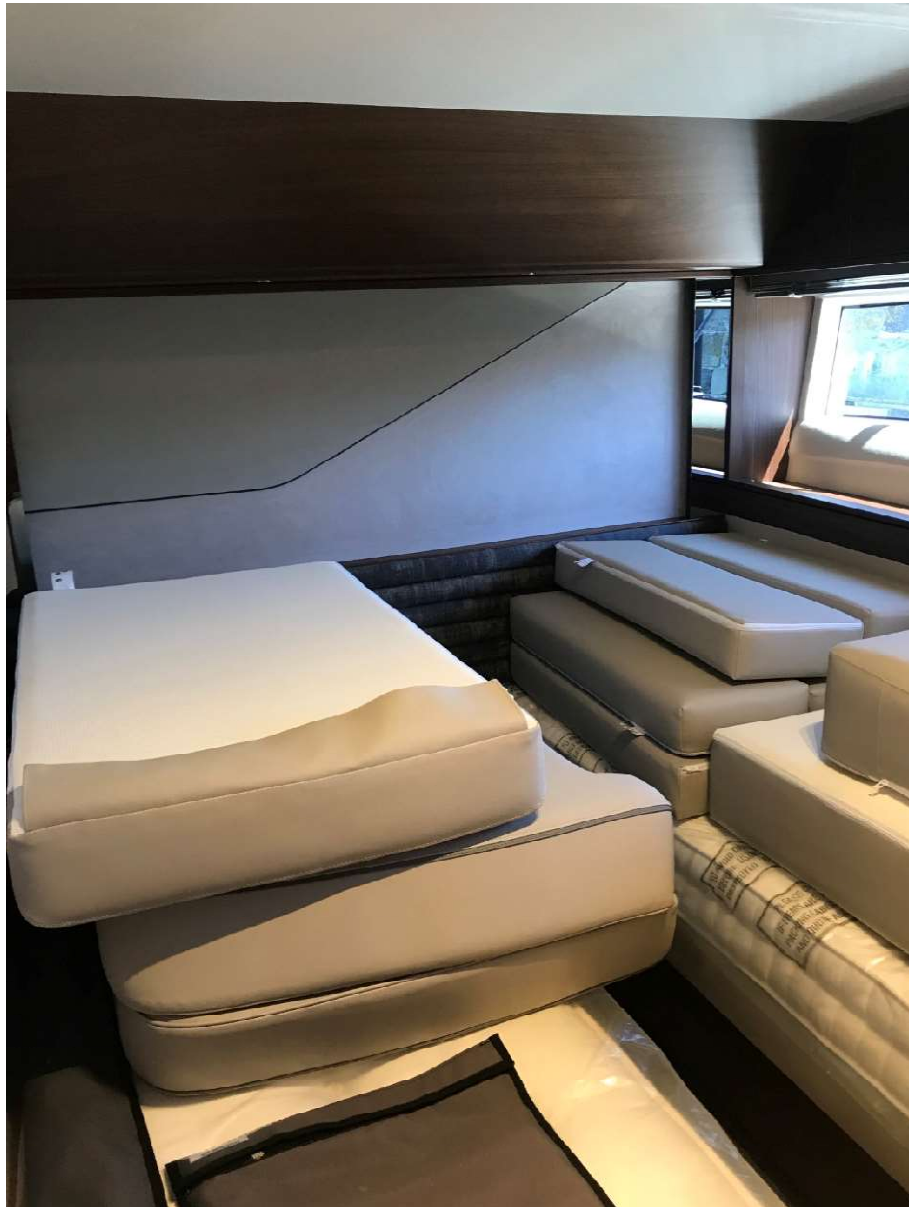
































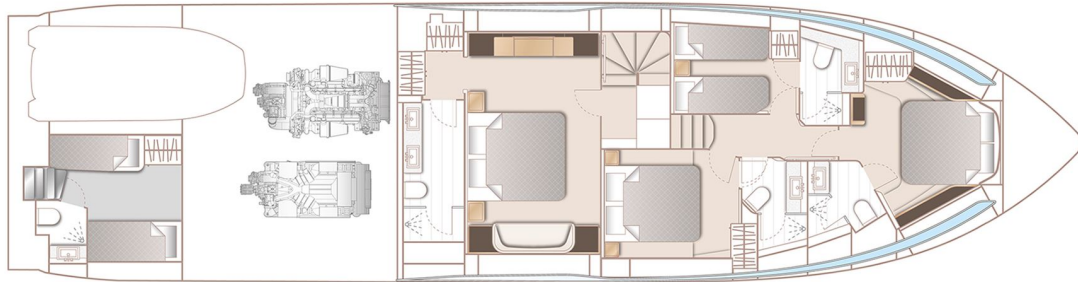
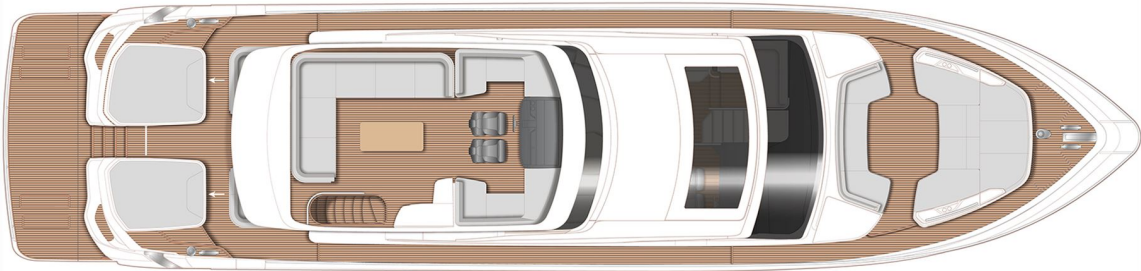
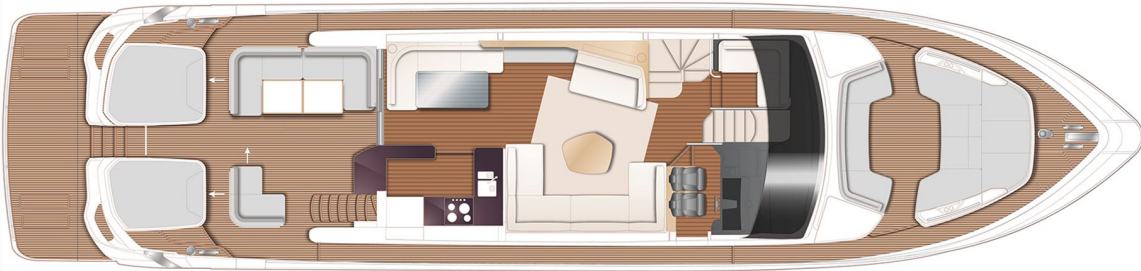












QUOTATION

B) OPTIONAL EQUIPMENT FITTED

1		£33,075.00	Hydraulic system consisting of separate engine hydraulic pumps on each engine with cross connection allowing any system to be supplied with hydraulic power from either engine. Including hydraulic anchor winch and 300kgf hydraulic bow thruster (in place of standard) 300kgf hydraulic stern thruster and hold function docking system. All with dual station controls
2			£85,905.00
3	Gyro stabilisation (Seakeeper 16)	£69,745.00	Craft built to MCA (Small Commercial Vessel Regulations MGN280(M)) Category 2 classification and including all safety equipment (i.e. to charter specification)
4	N.E.C.		White hull
5	£13,420.00		Walnut interior wood Satin finish (saloon, galley & helm floors are walnut as standard)
6	£2,300.00		Combination toilet/bidet in Master Stateroom in place of standard toilet
7	£3,185.00		Port cabin to have double berth conversion with powered sliding mechanism on inboard berth
8	Granite or Quartz galley worktop		N.E.C.
9	N.E.C.		Bathroom worktops are in Carrara White Solid Surface (gloss finish) as standard. Bathroom floors are Koko White Solid Surface (satin finish) as standard in all guest bathrooms with Carrara White Solid Surface (gloss finish) in Master Stateroom bathroom only
10	S.T.D.		Up/down electro hydraulic transom platform with 550Kg SWL fitted as standard with tender launch system fitted

11	N.E.C.	in the garage Passerelle to be wired via the master switch in addition to its own switch
12	£10,505.00	Side entry gates to aft port & starboard side decks in addition to standard passerelle
13	Electrically operated sun awning to aft end of cockpit (Grey fabric)	£14,420.00
14	£16,930.00	Electrically operated sliding roof over forward saloon area (incorporating standard skylights with electric blinds)
15	N.E.C.	Stainless steel keyway plates and chock mounting system on bathing platform for later fitting of wet bike
16	Stainless steel anchor in place of standard (50Kg)	£3,190.00
17	£6,760.00	Third station controls in cockpit (engine controls, thruster controls and engine emergency stop)
18	£6,615.00	Dedon Seax folding chairs x 3 for internal and external dining (frame in black finish with wooden arms. Textile finish in Sail Taupe)
19	£1,605.00	Ketal Zig Zag coffee table (with tray and deck mounted fixing point) for foredeck - (Tray top: 678 bone, Rope Frame: 420 Light Grey rope)
20	£2,910.00	ONAN 27kW/50Hz generator fitted in place of standard (recommended if gyro stabiliser is fitted)
21	Additional 22.5kW/50Hz generator	£23,270.00
22	Continental 220v/240v sockets	N.E.C.
23	Underwater transom lights (4 Lumishore SMX53 White)	£4,515.00
24	£4,515.00	Underwater lighting to aft hull sides (4 Lumishore SMX53 White)(2 per side)
25	£12,910.00	Freshwater maker (190 litres/hour) complete with remote instrumentation and service/spares kit
26	Lava Brick BBQ in place of standard	£125.00
27	Heated towel rail in bathroom (4)	£2,780.00
28	£4,840.00	Underfloor heating in bathrooms (4). Please note, not fitted in shower areas
29	£5,055.00	Wine cooler fitted above standard washer/dryer in owner's lobby
30	Icemaker fitted in sportbridge wetbar	£1,550.00
31	£5,515.00	Sub zero drawer fridges fitted in galley
32	110 litre fridge in crew mess unit	£1,460.00
33	Combination Microwave/grill fitted in crew mess	£835.00
34	£1,575.00	Optional lamp in Master Stateroom table lamp positioned at forward end of port vanity unit (Penta C'hi table lamp in Sand Glass finish with satinnickel metal base)
35	S.T.D.	Deck Saloon - 55" UHD LED TV on power lift Naim Uniti Atom audio system with Bluetooth, multi-zone streaming capability and dedicated app. Blu-ray UHD CD/DVD player. Paired with 2 Focal speakers and subwoofer
36	S.T.D.	Owners stateroom - 40" UHD LED TV, Naim Uniti Atom audio system with Bluetooth, multi-zone streaming capability and dedicated app. Bluray UHDCD/DVD player. Paired with 2 Focal speakers and subwoofer
37	S.T.D.	Sportbridge – Naim Uniti Atom audio system with Bluetooth, multi-zone streaming capability and dedicated app. Paired with 2 Bowers & Wilkins waterproof speakers (no HDMI connectivity)
38	S.T.D.	Cockpit seating area - Naim Uniti Atom audio system with Bluetooth, multi-zone streaming capability and dedicated app. Paired with 2 Bowers & Wilkins waterproof speakers (no HDMI connectivity)
39	S.T.D.	System includes onboard Ethernet network with 4G internet capability access to all areas. This improves connectivity via dedicated app
40	£4,635.00	Forward Guest cabin -32" HD LED TV, Naim Uniti Atom audio system with Bluetooth, multi-zone streaming capability and dedicated app. Bluray CD/DVD player. Paired with Focal speakers (2) and subwoofer
41	£4,185.00	Starboard cabin - 28" HD LED TV, Naim Uniti Atom audio system with Bluetooth, multi-zone streaming capability and dedicated app. Blu-ray CD/DVD player. Paired with Focal speakers (2)
42	£4,185.00	Port cabin - 22" HD LED TV, Naim Uniti Atom audio system with Bluetooth, multi-zone streaming capability and dedicated app. Blu-rayCD/DVD player. Paired with Focal speakers (2)
43	£4,185.00	Crew cabin - 22" HD LED TV, Naim Uniti Atom audio system with Bluetooth, multi-zone streaming capability and dedicated app. Blu-rayCD/DVD player. Paired with Focal speakers (2)
44	£3,435.00	Foredeck seating walk-through area - Naim audio system with Bluetooth, multi-zone streaming capability and dedicated app. Paired with 2 Bowers & Wilkins waterproof speakers (no HDMI connectivity)
45	£7,490.00	Four Raymarine Axiom XL16 (15.6") colour multifunction displays (i.e. 2 at each helm position) in place of standard
46	Raymarine remote control keypad (RMK-10) at upper and lower helms	£585.00

47	N.E.C.	European version plotter	
48	£925.00	Raymarine AIS 700 Class B transponder interfaced with chartplotter and with 8ft (2.4m) aerial	
49	N.E.C.	International VHF	
50	S.T.D.	Airconditioning/heating reverse cycle (186,000BTU) suitable for temperatures to 40°C (tropical) is fitted as standardWith controls in all cabins and outlets in all areas (including bathrooms)	
51	£645.00	Cockpit and Sportsbridge fixed seating with no contrast. Sportsbridge helm seats, Foredeck and Cockpit Sunbeds with contrastpanelling and piping. Foredeck seating with contrast piping in Comfort Exterior III Vogue with Met, Vogue or Hitch Contrast	
52		£6,670.00	
53		N.E.C.	
54		£5,495.00	
55		£1,080.00	
56		Additional charge for Bimini to be electro-hydraulically powered	£10,115.00
57		N.E.C.	
58		£6,070.00	
59		S.T.D.	
60		1Kg Hull/Superstructure gelcoat	£30.00
61		Spare set of anodes (hull, hydraulic platform & swim ladder)	£145.00
62		£4,060.00	
63		Compass adjuster to swing both compasses	£515.00
64		Supply 5 litre container of engine oil	£45.00
65		Sea Commissioning	£6,500.00
Total B		£410,505.00	